



*Quinn*

Die Liebe zum Schmuck ist es,  
für die wir bei Quinn leben und arbeiten.

Natürlichkeit und Authentizität sind uns dabei besonders wichtig.  
Dies zeigt sich in der hohen Qualität der Verarbeitung  
ebenso wie im klaren und schlichten Design unseres Schmucks.

So schaffen wir authentischen Schmuck für echte Gefühle.

*The love for jewellery constitutes the basic  
principle of our everyday life and work at Quinn.*

*We set great store by adopting a natural approach and acting  
with integrity. All of this is reflected in the high quality of  
workmanship and the clarity and simplicity of our jewellery design.*

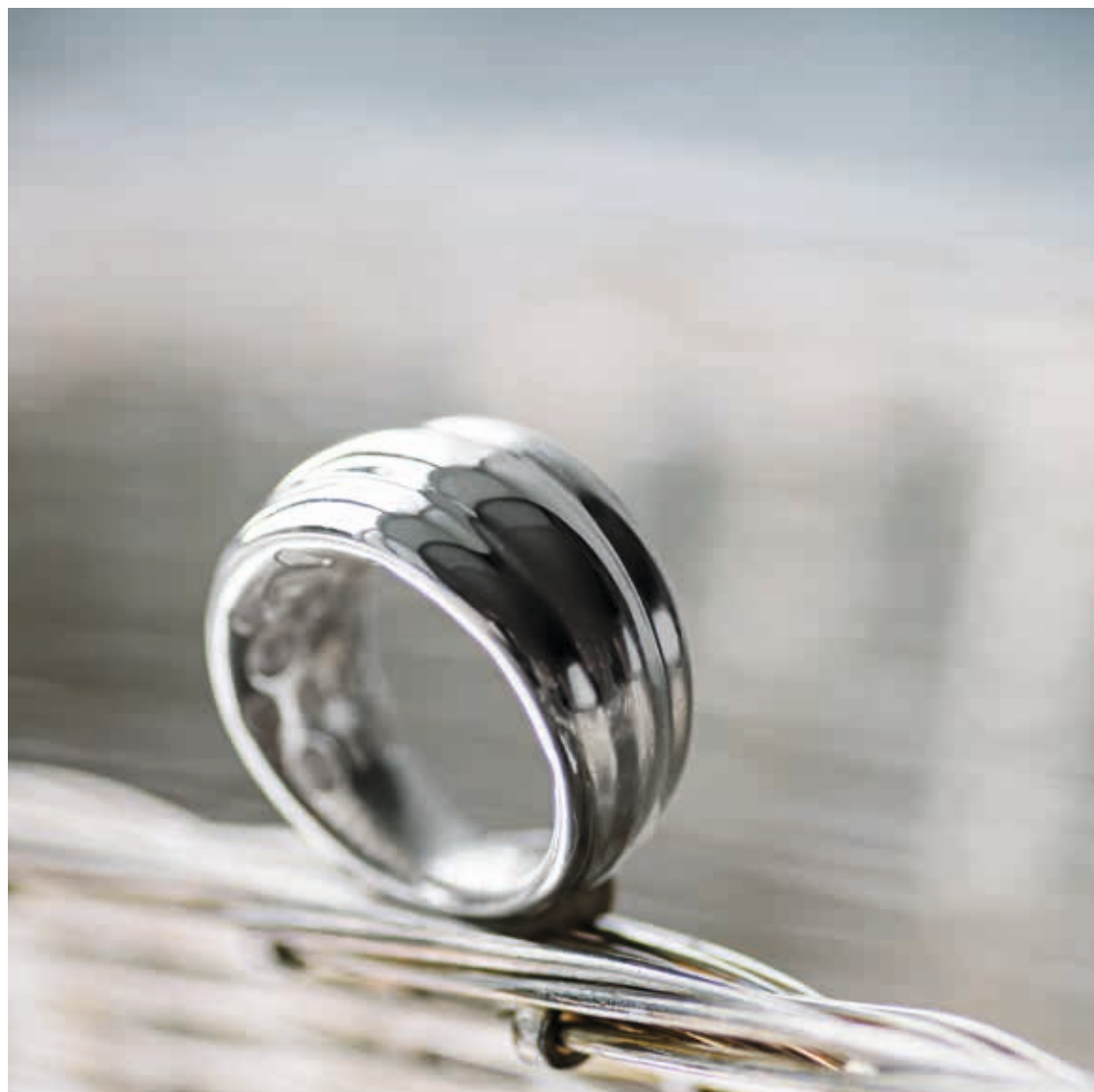
*That's how we create authentic jewellery  
for genuine feelings.*

*Authentic jewellery  
for genuine feelings*



2024





















































14k = 14 karat gold (585/1000)\*  
 ct = brilliant weight in carat  
 silver = sterling silver (925/1000)  
 platinum = 950/1000 platinum

\* All gold articles are also available in 18 karat (750/1000).

**brilliant-cut diamonds in silver jewellery:**

w/p = Wesselton (GIA: H - white) / piqué (P11)

**brilliant-cut diamonds in gold and platinum jewellery:**

tw/si = Top Wesselton (GIA: G - Fine white) / small inclusions (SI1)

For us, sustainability means consciously using recycled precious metals, such as old silver and old gold, as far as possible and thus manufacturing jewelry responsibly.

We have the goal to further increase the use of sustainable materials in order to minimize our environmental footprint and do our part to protect the planet.

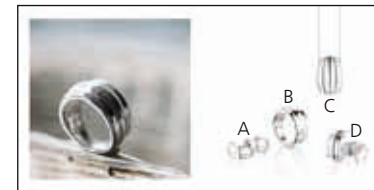
Errors and omissions excepted.

**As of February 2024**



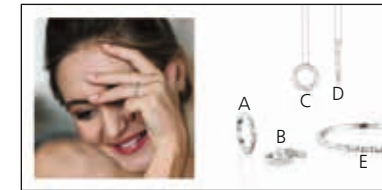
**MAGIC\_TRIANGLE**

- A) Ring 022 7096, silver, polished
- B) Earrings with hinge 036 7090, silver, polished
- C) Necklace 027 7094, silver, polished



**SWELL\_WELL**

- A) Earrings with hinge 036 7550, silver, polished
- B) Ring 022 7596, silver, polished
- C) Necklace 027 7594, silver, polished
- D) Ear studs 036 7590, silver, polished



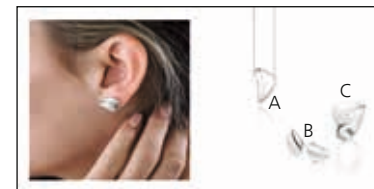
**SKIN\_LINES**

- A) Ring 021 7026, silver, matted, brilliant w/p 0,04ct
- B) Earrings with hinge 036 7029, silver, matted, brilliant w/p 0,06ct
- C) Necklace 027 7029, silver, matted, brilliant w/p 0,04ct
- D) Necklace 027 7039, silver, matted, brilliant w/p 0,04ct
- E) Bangle with hinge 029 7029, silver, matted, brilliant w/p 0,04ct



**BE\_TOGETHER**

- A) Bangle 029 7440, silver, polished
- B) Bangle with hinge 029 7400, silver, polished
- C) Ring 022 7446, silver, polished
- D) Earrings with hinge 036 7440, silver, polished



**HIGH\_TENSION**

- A) Necklace 027 7494, silver, polished
- B) Ear studs 036 7490, silver, polished
- C) Ring 022 7496, silver, polished



**SASSY\_MASSY**

- A) Necklace 027 7754, silver, polished
- B) Ear studs 036 7750, silver, polished
- C) Ring 022 7756, silver, polished



**JOLLY\_UP**

- A) Ring 021 8226, silver, polished/matted, brilliant w/p 0,02ct
- B) Ear studs 036 8229, silver, polished/matted, brilliant w/p 0,04ct
- C) Necklace 027 8229, silver, polished/matted, brilliant w/p 0,02ct



**HAY\_WIRE**

- A) Pendant 024 7680, silver, polished
- B) Belcher necklace 027 0144, silver, length adjustable
- C) Earrings with hinge 036 7680, silver, pol.
- D) Ring 022 1746, silver, polished





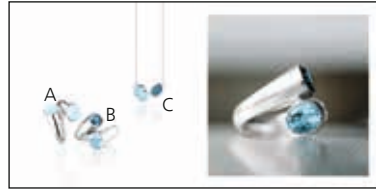
#### CUSHY\_CUSHION

- A) Ring 021 765663, silver, polished, garnet
- B) Ring 021 765658, silver, polished, blue topaz treated
- C) Ring 021 765647, silver, polished, peridot
- D) Ring 021 7656582, silver, polished, blue topaz treated (london blue)
- E) Necklace 027 765947, silver, polished, peridot
- F) Drop earrings with hinge 035 765947, silver, polished, peridot



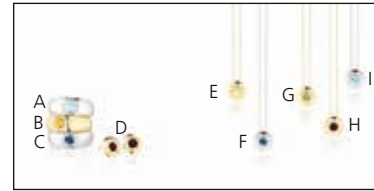
#### CHILLI\_NESS

- A) Pendant 024 7030, silver
- B) Belcher necklace 027 5714, silver
- C) Earrings with hinge 036 7030, silver, polished
- D) Ring 022 7036, silver, polished



#### KITTY\_CORNER

- A) Ring 021 837658, silver, polished, blue topaz treated
- B) Ring 021 833658258, silver, polished, blue topaz treated (london blue)
- C) Necklace 027 760958582, silver, polished, blue topaz treated (london blue)



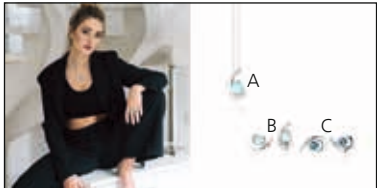
#### PIANETA

- A) Ring 621 798658, 14kt white gold, polished, brilliant tw/si 0,09ct, blue topaz treated
- B) Ring 521 786611, 14kt yellow gold, polished, brilliant tw/si 0,09ct, citrine golden
- C) Ring 621 7866582, 14kt white gold, polished, brilliant tw/si 0,09ct, blue topaz treated (london blue)
- D) Ear studs 536 786963, 14kt yellow gold, polished, brilliant tw/si 0,10ct, garnet
- E) Necklace 527 798911, 14kt yellow gold, polished, brilliant tw/si 0,09ct, citrine
- F) Necklace 627 7869582, 14kt white gold, polished, brilliant tw/si 0,09ct, blue topaz treated (london blue)
- G) Necklace 527 786947, 14kt yellow gold, polished, brilliant tw/si 0,09ct, peridot
- H) Necklace 527 786963, 14kt yellow gold, polished, brilliant tw/si 0,09ct, garnet
- I) Necklace 627 786958, 14kt white gold, polished, brilliant tw/si 0,09ct, blue topaz treated



#### TRIFOGLIO

- A) Ring 621 6966, 14kt white gold, matted/polished, brilliant tw/si 0,15ct
- B) Ring 521 6966, 14kt yellow gold, matted/polished, brilliant tw/si 0,15ct
- C) Earrings with hinge 536 6969, 14kt yellow gold, matted/polished, brilliant tw/si 0,18ct
- D) Necklace 627 6969, 14kt white gold, matted/polished, brilliant tw/si 0,09ct



#### KITTY\_CORNER

- A) Necklace 027 837958, silver, polished, blue topaz treated
- B) Ear studs 036 837958, silver, polished, blue topaz treated
- C) Ear studs 036 8339582, silver, polished, blue topaz treated (london blue)



#### CON\_FUSION

- A) Ring 022 7916, silver, polished
- B) Earrings with hinge 036 7910, silver, polished
- C) Necklace 027 7914, silver, polished



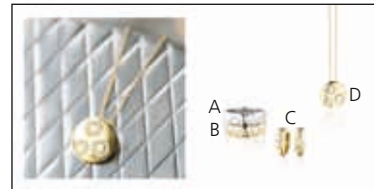
#### IN\_ALL

- A) Ring 022 8326, silver, polished
- B) Anchor necklace 027 5162, silver
- C) Pendant 024 8320, silver, polished
- D) Earrings with hinge 036 8320, silver, polished



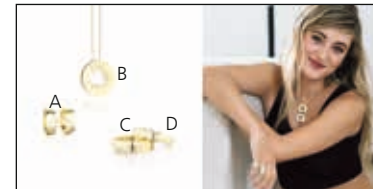
#### UNITA

- A) Ring 521 6756, 14kt yellow gold, polished, brilliant tw/si 0,42ct
- B) Ring 621 6746, 14kt white gold, polished, brilliant tw/si 0,10ct
- C) Ring 321 6746, 14kt rose gold, polished, brilliant tw/si 0,10ct
- D) Ring 521 6776, 14kt yellow gold, polished, brilliant tw/si 0,30ct
- E) Ring 621 6756, 14kt white gold, polished, brilliant tw/si 0,42ct
- F) Ring 321 6736, 14kt rose gold, polished, brilliant tw/si 0,14ct
- G) Ring 621 6776, 14kt white gold, polished, brilliant tw/si 0,30ct
- H) Ring 521 6776, 14kt yellow gold, polished, brilliant tw/si 0,30ct



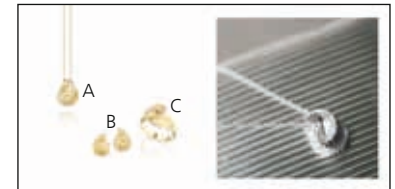
#### PIANETA

- A) Ring 621 7156, 14kt white gold, polished, brilliant tw/si 0,26ct
- B) Ring 521 7156, 14kt yellow gold, polished, brilliant tw/si 0,26ct
- C) Earrings with hinge 536 7159, 14kt yellow gold, pol., Brill. tw/si 0,22ct
- D) Necklace 527 7159, 14kt yellow gold, polished, brilliant tw/si 0,16ct



#### STELLATA

- A) Earrings with hinge 536 7349, 14kt yellow gold, pol., brilliant tw/si 0,18ct
- B) Necklace 527 7349, 14kt yellow gold, polished, brilliant tw/si 0,22ct
- C) Ring 521 7316, 14kt yellow gold, polished, brilliant tw/si 0,19ct
- D) Ring 521 7346, 14kt yellow gold, polished, brilliant tw/si 0,13ct



#### VIVEZZA

- A) Necklace 527 7529, 14kt yellow gold, matted, brilliant tw/si 0,22ct
- B) Ear studs 536 7529, 14kt yellow gold, matted, brilliant tw/si 0,45ct
- C) Ring 521 7526, 14kt yellow gold, matted, brilliant tw/si 0,34ct





*Quinn*

QUINN Scheurle GmbH  
Gutenbergstr. 23 @ DE-73525 Schwäbisch Gmünd  
Tel. +49 (0)7171 6000-0 @ Fax +49 (0)7171 6000-11  
[www.quinn.de](http://www.quinn.de)