


*Quinn*





Die Liebe zum Schmuck ist es,  
für die wir bei Quinn leben und arbeiten.

Natürlichkeit und Authentizität sind uns dabei besonders wichtig.  
Dies zeigt sich in der hohen Qualität der Verarbeitung  
ebenso wie im klaren und schlichten Design unseres Schmucks.

So schaffen wir authentischen Schmuck für echte Gefühle.

The love for jewellery constitutes the basic  
principle of our everyday life and work at Quinn.

We set great store by adopting a natural approach and acting  
with integrity. All of this is reflected in the high quality of  
workmanship and the clarity and simplicity of our jewellery design.

That's how we create authentic jewellery  
for genuine feelings.

Authentic  
jewellery  
for genuine  
feelings

2023













































14k = 14 karat gold (585/1000)\*  
 ct = brilliant weight in carat  
 silver = sterling silver (925/1000)  
 platinum = 950/1000 platinum

\* All gold articles are also available in 18 karat (750/1000).

**brilliant-cut diamonds in silver jewellery:**  
 w/p = Wesselton (GIA: H - white) / piqué (PI1)

**brilliant-cut diamonds in gold and platinum jewellery:**  
 tw/si = Top Wesselton (GIA: G - Fine white) / small inclusions (SI1)

For us, sustainability means consciously using recycled precious metals, such as old silver and old gold, as far as possible and thus manufacturing jewelry responsibly.

We have the goal to further increase the use of sustainable materials in order to minimize our environmental footprint and do our part to protect the planet.

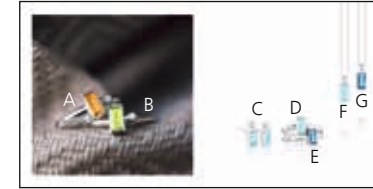
Errors and omissions excepted.

**As of February 2023**



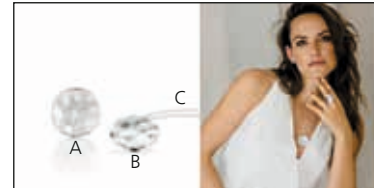
**WATER\_REED**

- A) Necklace 027 6297, silver, polished
- B) Necklace 027 6275, silver, polished
- C) Ring 022 6276, silver, polished
- D) Pendant 024 6270, silver, polished
- E) Earrings with hinge 036 6270, silver, polished



**CLEAR\_APPEAR**

- A) Ring 021 618611, silver, polished, brilliant w/p 0,03ct, citrine (palmeira)
- B) Ring 021 618647, silver, polished, brilliant w/p 0,03ct, peridot
- C) Ear studs 036 618958, silver, polished, brilliant w/p 0,05ct, blue topaz treated
- D) Ring 021 618658, silver, polished, brilliant w/p 0,03ct, blue topaz treated
- E) Ring 021 6186582, silver, polished, brilliant w/p 0,03ct, blue topaz treated (London blue)
- F) Necklace 027 618958, silver, polished, brilliant w/p 0,03ct, blue topaz treated
- G) Necklace 027 6189582, silver, polished, brilliant w/p 0,03ct, blue topaz treated (London blue)



**UN\_EVEN**

- A) Pendant 024 6909, silver, matted, brilliant w/p 0,05ct
- B) Pendant 024 6940, silver, polished
- C) Belcher necklace 027 0149, length adjustable, silver, polished



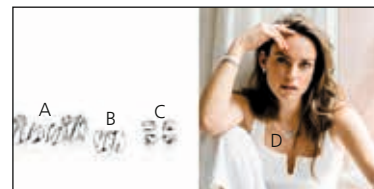
**UN\_EVEN**

- A) Ear studs 036 6940, silver, polished
- B) Ear studs 036 6909, silver, matted, brilliant w/p 0,06ct
- C) Ring 021 6906, silver, matted, brilliant w/p 0,05ct
- D) Ring 022 6946, silver, polished



**TWO\_LANE**

- A) Drop earrings 035 689958, silver, polished, blue topaz treated
- B) Ring 021 689658, silver, polished, blue topaz treated
- C) Necklace 027 689958, silver, polished, blue topaz treated



**ROCKY\_NESS**

- A) Bangle 029 7050, silver, polished
- B) Ring 022 7056, silver, polished
- C) Earrings with hinge 036 7050, silver, polished
- D) Necklace 027 7054, silver, polished



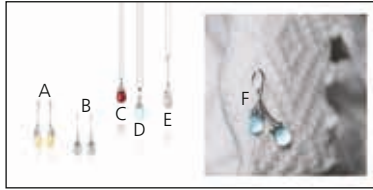
**SUB\_SEA**

- A) Pendant 024 2750, silver, polished
- B) Ear studs 036 2750, silver, polished
- C) Ring 022 2756, silver, polished



### TIGHT\_KNIT

- A) Bangle 029 6370, silver, polished
- B) Ring 022 6376, silver, polished
- C) Ring 022 6346, silver, polished



### HEY\_CUTIE

- A) Drop earrings 035 683946, silver, polished, yellow quartz
- B) Drop earrings 035 685950, silver, polished, grey moonstone
- C) Necklace 027 587963, silver, polished, garnet
- D) Necklace 027 685958, silver, polished, blue topaz treated
- E) Necklace 027 683950, silver, polished, grey moonstone
- F) Drop earrings 035 587958, silver, polished, blue topaz treated



### RIBBON

- A) Drop earrings 035 0960, silver, polished
- B) Pendant 024 0960, silver, polished
- C) Belcher necklace 027 0149, length adjustable, silver, polished



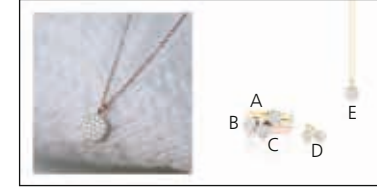
### FORMARE

- A) Earrings with hinge 536 4809, 14k yellow- & white gold, polished, brilliant tw/si 0,08ct
- B) Necklace 527 4809, 14k yellow- & white gold, polished, brilliant tw/si 0,05ct
- C) Ring 521 4806, 14k yellow- & white gold, polished, brilliant tw/si 0,10ct
- D) Ring 621 4806, 14k white gold, polished, brilliant tw/si 0,10ct
- E) Ring 321 4806, 14k rose- & white gold, polished, brilliant tw/si 0,10ct



### MATTANA

- A) Ring 321 688632, 14k rose gold, polished, brilliant tw/si 0,16ct, smoky quartz
- B) Ring 621 6886582, 14k white gold, polished, brilliant tw/si 0,16ct, blue topaz treated (London blue)
- C) Drop earrings 635 6889582, 14k white gold, polished, brilliant tw/si 0,24ct, blue topaz treated (London blue)
- D) Necklace 527 6889582, 14k white gold, polished, brilliant tw/si 0,12ct, blue topaz treated (London blue)



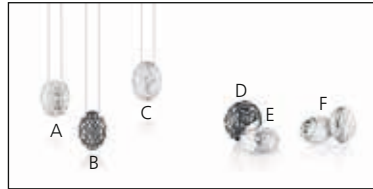
### GRACILE

- A) Ring 521 6516, 14k yellow gold, partially rhodanised, polished, brilliant tw/si 0,09ct
- B) Ring 621 6516, 14k white gold, rhodanised, polished, brilliant tw/si 0,09ct
- C) Ring 321 6516, 14k rose gold, partially rhodanised, polished, brilliant tw/si 0,09ct
- D) Ear studs 536 6519, 14k yellow gold, partially rhodanised, polished, brilliant tw/si 0,07ct
- E) Necklace 527 6519, 14k yellow gold, partially rhodanised, polished, brilliant tw/si 0,09ct



### PERSIAN\_SENSE

- A) Ear studs 036 676003, silver, partially oxidised, polished
- B) Ring 022 676603, silver, partially oxidised, polished
- C) Ring 022 6766, silver, polished



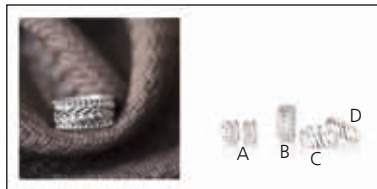
### PERSIAN\_SENSE & WILD\_NESS

- A) Necklace 027 6764, silver, polished
- B) Necklace 027 676403, silver, partially oxidised, polished
- C) Necklace 027 6774, silver, polished
- D) Ring 022 677603, silver, partially oxidised, polished
- E) Ring 022 6776, silver, polished
- F) Ear studs 036 6770, silver, polished



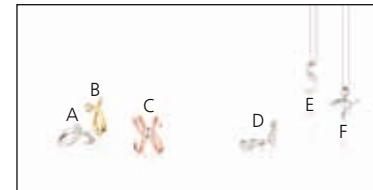
### INTER\_LACED

- A) Necklace 027 6204, silver, polished
- B) Necklace 027 6219, silver, polished



### INTER\_LACED

- A) Earrings with hinge 036 6200, silver, polished
- B) Ring 022 6206, silver, polished
- C) Ring 022 6226, silver, polished
- D) Ring 022 6216, silver, polished



### FIORENTE

- A) Ring 621 6486, 14k white gold, polished/matted, brilliant tw/si 0,16ct
- B) Ring 521 6486, 14k yellow gold, polished/matted, brilliant tw/si 0,16ct
- C) Ring 321 6496, 14k rose gold, polished/matted, brilliant tw/si 0,17ct
- D) Earrings with hinge 636 6789, 14k white gold, polished/matted, brilliant tw/si 0,16ct
- E) Necklace 627 6789, 14k white gold, polished/matted, brilliant tw/si 0,15ct
- F) Necklace 627 6799, 14k white gold, polished/matted, brilliant tw/si 0,17ct



### ROSETTA

- A) Necklace 527 6059, 14k yellow gold, polished, brilliant tw/si 0,12ct
- B) Ear studs 536 6059, 14k yellow gold, polished, brilliant tw/si 0,14ct
- C) Ring 621 6056, 14k white gold, polished, brilliant tw/si 0,33ct
- D) Ring 321 6056, 14k rose gold, polished, brilliant tw/si 0,33ct
- E) Ring 521 6056, 14k yellow gold, polished, brilliant tw/si 0,33ct



### ROSETTA\_PT

- A) Ring 121 5816, platinum, matted, brilliant tw/si 0,10ct
- B) Ring 122 3516, platinum, matted
- C) Earrings with hinge 136 5819, platinum, matted, brilliant tw/si 0,10ct
- D) Necklace 127 5549, platinum, matted/polished, brilliant tw/si 0,02ct
- E) Necklace 127 5819, platinum, matted, brilliant tw/si 0,06ct





*Quinn*

QUINN Scheurle GmbH  
Gutenbergstr. 23 ☎ DE-73525 Schwäbisch Gmünd  
Tel. +49 (0)7171 6000-0 ☎ Fax +49 (0)7171 6000-11  
[www.quinn.de](http://www.quinn.de)